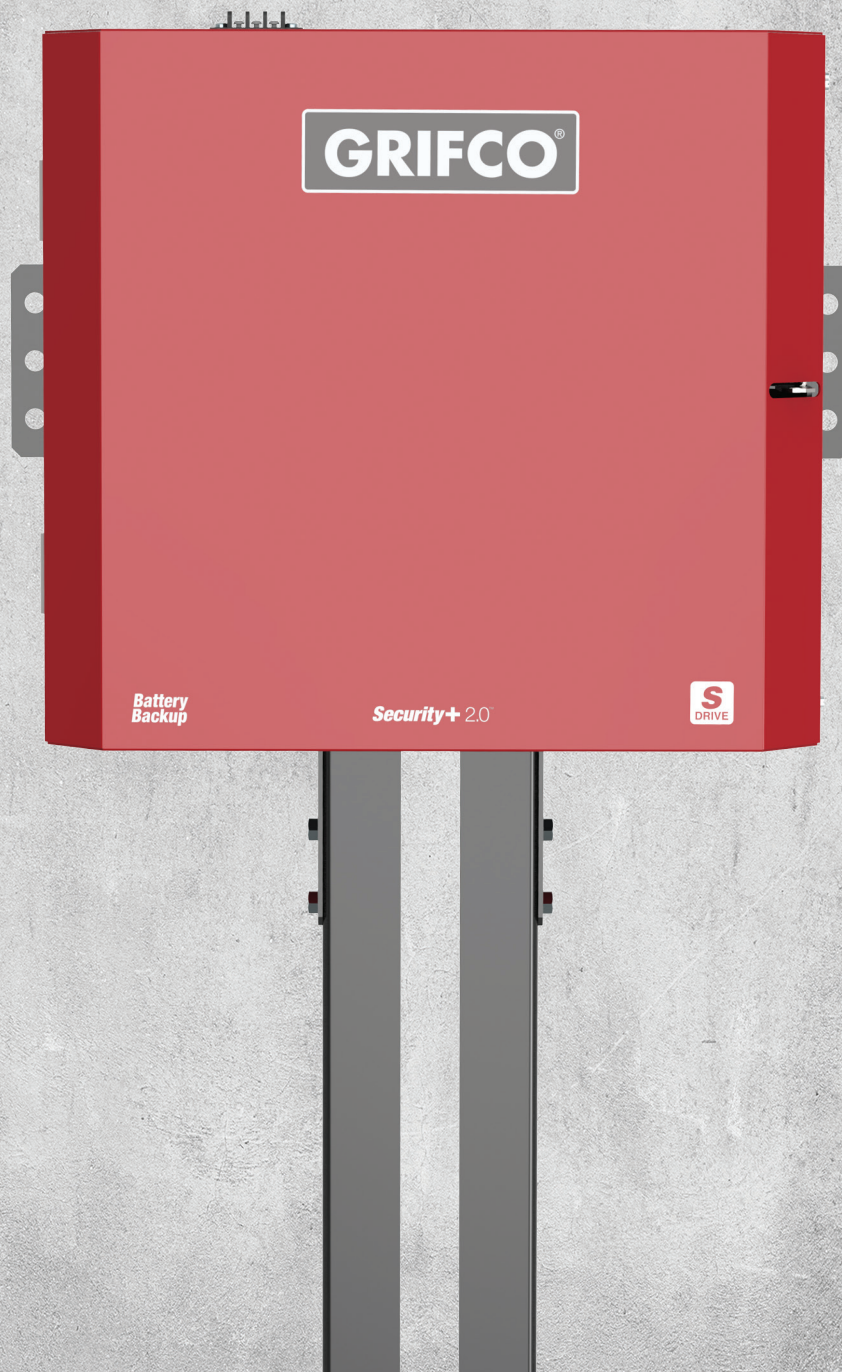


# GRIFCO<sup>®</sup>

POWERING COMMERCIAL DOORS



COMMERCIAL SECTIONAL  
DOOR OPERATOR



# GRIFCO<sup>®</sup>

OVER 100 YEARS OF AUSTRALIAN MANUFACTURING

# The Smooth Operator

Quiet, safe, reliable, powerful, adaptable.

## Introducing S-Drive!

With constant duty cycle, battery backup onboard and the industry's best warranty, the new Grifco S-Drive is indeed the Smooth Operator.

It is purpose built for high-cycle, highly demanding commercial sectional doors found in car parks, emergency services buildings and commercial tenancies.

- The quiet, DC motor and purpose-designed gearbox deliver extremely smooth and fast door cycles, with soft start and soft stop.
- The integral logic boards offer ultimate adaptability to meet the demanding needs of carpark applications.
- The extremely durable rail and innovative sliding trolley have been engineered to meet the high-cycle demands of busy carpark doors.
- The operator has been thoughtfully designed for low ceiling carpark applications, with a low profile, lockable enclosure.



### LASTING PERFORMANCE

Soft start / stop for increased reliability and reduced maintenance. Purpose designed DC motor and gearbox for continual duty and quiet operation



### SAFE AND COMPLIANT

Meets all applicable regulatory standards. Utilise Grifco's broad range of safety accessories to achieve a safe and compliant installation

### Battery Backup



### ROBUST AND DURABLE

The steel enclosure and rail are built to withstand the demanding requirements of high cycle commercial applications

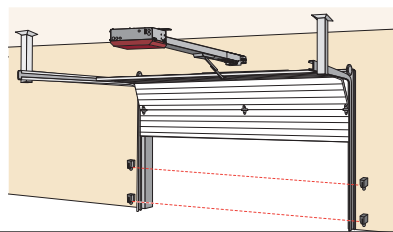
### RELIABLE OPERATION

Integral battery backup can provide over 100 cycles\* when the power fails

*\* Dependant on door and battery condition and age.*

## Typical Installation & Specifications

Spring balanced commercial sectional door, common in multi-tenanted carpark and commercial applications.



Main AC Power Supply	230-240 VAC 50Hz, 400W
Rated Load (R/T)	270N (Continuous)
System Operating Voltage	24 VDC Transformer Run / Battery Backup
Accessory Power	24 VDC, 500 mA max. for ON and SW (switched)
Max Door Heights (Part No.)	2.4m (GSD-R2.4M) / 3.6m (GSD-R3.6M) / 6.0m (GSD-RKIT)*
Maximum Door Weight	315.5 kg balanced door
Maximum Door Area	26m <sup>2</sup>
Travel Speed	20cm per second
Maximum Duty Cycle	Continuous (100%)
Operating Temperature	+5°C to +40°C
Logic	Complete, expanded logic for configuration and integration
Compliance	AS/NZS 60335-1 / AS/NZS 60335-2-103 / AS/NZS 4417.1

\* GSD-RKIT requires fabrication of rail and assembly



## An industry leading warranty from your partner in commercial door automation

The serious warranty offered on the S-Drive covers the extreme working conditions of high-cycle applications such as busy carparks.

The 2 year / 100,000 cycle warranty covers the entire operator, not just the "drive units" as warranted by other manufacturers.

## Certificate of Suitability

S-Drive has been tested to comply with multiple relevant Australian Standards pertaining to commercial doors. The published CoS is available to all customers on request.





## Exceptionally powerful, quiet and durable

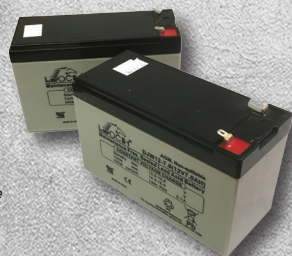
With 100% duty cycle, the S-Drive constantly performs in the busiest of car parks. The DC motor and commercial gear-driven transmission combine to deliver unsurpassed reliability and smooth, quiet operation.

The door starts and finishes its travel slowly before speed ramps up. This is essential for minimising noise and vibration in apartments directly above or adjacent to the carpark.

## Battery Backup Onboard

The two 7Ah integral batteries have been known to provide over 100 cycles\*, ensuring access in and out of the facility in the event of a power outage.

Batteries are conveniently mounted within the operator and are supplied as standard.



\* Actual results will vary. Performance under battery backup is determined by age and condition of door, operator and batteries.

## Low Profile, Lockable Enclosure

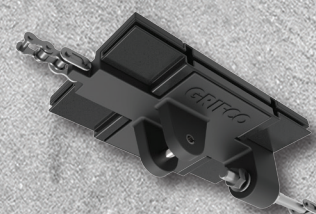
The S-Drive operator is only 200mm high, making it ideal for car parks with low ceilings. The lateral mounting plates are permanently fixed to the operator and allow for easy surface mounting or suspension via strapping. The enclosure can be padlocked to prevent unauthorised access.



## Innovative Trolley and Sliders

The slider provides reliably smooth operation with every cycle. The hard-wearing and replaceable acetyl inlays capture the slider on the rail and effortlessly glide with very little friction or noise.

With no wheels or other moving parts, the slider is not prone to derailment, seizing or obtrusive noise.



# ORDER CODES

## S-DRIVE INDIVIDUAL COMPONENTS

Part Number	Includes
GSD-SDO	S-Drive Operator with BBU
GSD-R2.4M	Rail for door max 2.4m high
GSD-R3.6M	Rail for door max 3.6m high
GSD-RKIT*	Rail kit for door max 6.0m high



## S-DRIVE COMPLETE KITS

Part Number	Includes
GSDK-R2.4M-GPS15RK	S-Drive Operator, Rail for door max 2.4m high, GPS15 Reflective Safety Beam, 2 x E960G 4-Channel Transmitters
GSDK-R3.6M-GPS15RK	S-Drive Operator, Rail for door max 3.6m high, GPS15 Reflective Safety Beam, 2 x E960G 4-Channel Transmitters
GSDK-RKIT-GPS15RK*	S-Drive Operator, Rail kit for door max 6.0m high, GPS15 Reflective Safety Beam, 2 x E960G 4-Channel Transmitters

GSDK-R2.4M-774RK	S-Drive Operator, Rail for door max 2.4m high, 774ANZ Send / Receive Safety Beam, 2 x E945G 3-Channel Transmitters
GSDK-R3.6M-774RK	S-Drive Operator, Rail for door max 3.6m high, 774ANZ Send / Receive Safety Beam, 2 x E945G 3-Channel Transmitters
GSDK-RKIT-774RK*	S-Drive Operator, Rail kit for door max 6.0m high, 774ANZ Send / Receive Safety Beam, 2 x E945G 3-Channel Transmitters

\* GSD-RKIT requires steel fabrication of rail length

# ACCESSORIES

## Wired Controls and Peripherals

Recessed 3-pos. Return Key Switch



Part No. KS106

Wall-mounted 3-pos. Return Key Switch



Part No. KS103

Up/Stop/Down Wall Control



Part No. PU103L

Emergency Stop Button



Part No. PU100

Flashing Strobe Lights



Part No. FLR24

Strobe Lights and Sounders



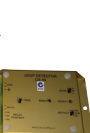
Part No. BS2224

2-Aspect LED Traffic Light IP55



Part No. TL24

Loop Detector System



Part No. LD000

## Remote Access Devices

4-Channel Keyring Transmitter



Part No. E960G

Transmitter Management (1,000 devices)



Part No. GSD-STAR1000EVO

Bulk Pack Coming Soon!

3-Channel Keyring Transmitter



Part No. E945G

3-Channel Visor Transmitter



Part No. E943G

2-Channel Wireless Wall Transmitter



Part No. E138G

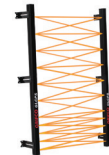
Wireless Security Keypad



Part No. E840G

## Entrapment Protection Systems

Light Curtain



Part No. GLCPS

Send / Receive Monitored Safety Beam



Part No. GPS772

Reflective Monitored Safety Beam



Part No. GPS15

Monitored Safety Edge



Part No. BMSE30K (3m)

**AU: 1800 GRIFCO | www.grifco.com.au**  
**NZ: 0800 653 667 | www.grifco.co.nz**

### Chamberlain Australia Pty Ltd

Head Office - Unit 1, 75 Epping Rd North Ryde NSW 2113  
 Manufacturing - 15 Dell Rd, West Gosford NSW 2250

### Chamberlain Branches

Sydney - Unit 1, 75 Epping Rd North Ryde NSW 2113  
 Melbourne - Unit 15, 85-91 Keilor Park Dr Tullamarine VIC 3043  
 Brisbane - Unit 19, 140 Wecker Rd Mansfield QLD 4122  
 Perth - 54 Millrose Dr Malaga WA 6090

### Chamberlain New Zealand Ltd

17A Arrenway Dr, Rosedale 0632 Auckland NZ

**GRIFCO®**